

Shown: VA-42, VAS-42



Air valves

Enerpac's line of directional air valves and accessories complete your workholding system. Used to control air operated hydraulic units, they increase your productivity and efficiency.

Application

VA-series directional air valves provide either manual or electric control to air operated hydraulic units. Accessories such as rapid exhaust, check valves, silencers and regulators complete the air control system.

- Accessory valves provide greater safety and more efficient clamping cycles
- Recommended for use with all air powered units
- Directional valves to control booster and pump air supply
- Remote air valve permits either hand or foot operation.

Important

Valving help
See Basic System Set-up and Valve Information in our "Yellow Pages".

To control and regulate air supply

VA-42 Manual operated air valve 5-way, 2-position

- For control of boosters
- Viton seals standard

VAS-42 Solenoid operated air valve 5-way, 2-position

- For control of pump and boosters air supply
- Viton seals standard
- Solenoid: 120 VAC, 50/60Hz
Amperage: inrush 0,11 Amps, holding 0,07 Amps
- Maximum cycle rate: 600 cycles per minute

VR-3 Rapid exhaust valve

- Enables booster to advance and retract faster
- Instantly exhaust air supply from booster to atmosphere

V-19 Air check valve

- Prevent rapid drop of air pressure to the booster in the event of sudden loss of input air

RFL-102 Regulator-Filter-Lubricator

- Regulates air pressure
- Filter air input
- Lubricates air motors with a fine oil vapor mist
- Maximum air flow 1500 l/min

HV-1000A Air pilot holding valve

- Holds fluid under pressure offering independent control of different branches of the same fixture
- Valve can control the pilot air and the booster in sequence
- Max. oil flow 5 l/min
- Works with the VA-42 four-way air valve and a booster

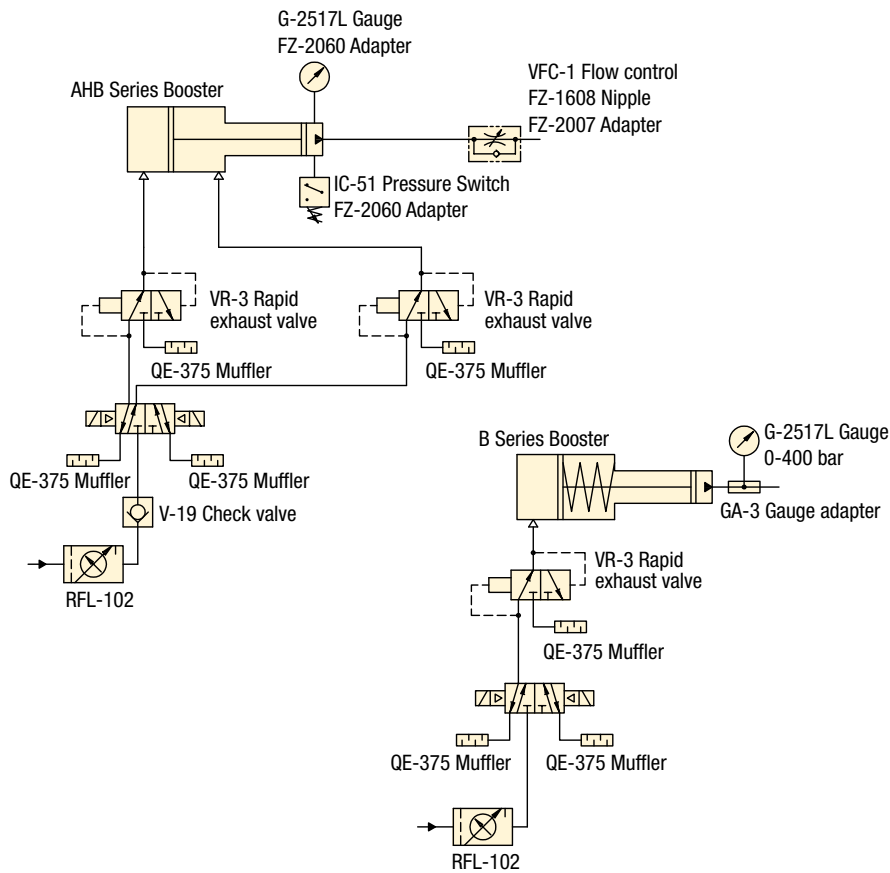
QE-375 Muffler

- Use with VR-3 or VAS/VA-42
- Reduces noise level of exhaust air from pump.

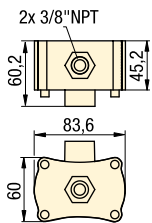
Product selection

Maximum pressure bar	Model number
▼ Air valves	
2-10	VA-42
2-10	VAS-42
0-7	VR-3
0-7	V-19
▼ Holding Valve	
0-7	HV-1000A*
▼ Accessories	
0-8,6	RFL-102
0-8,6	QE-375

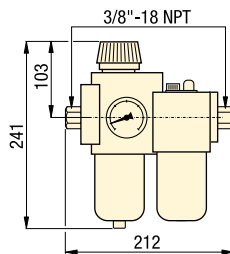
* Maximum hydraulic pressure: 207 bar.



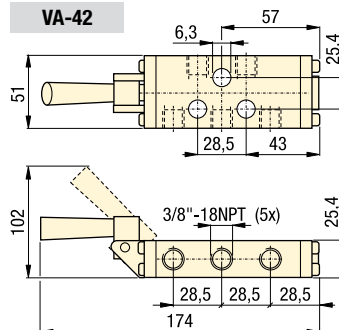
VR-3



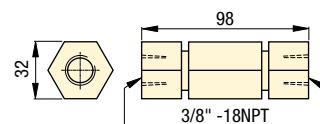
RFL-102



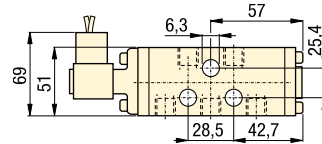
VA-42



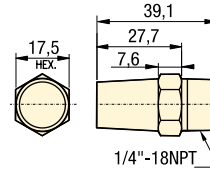
V-19



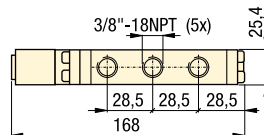
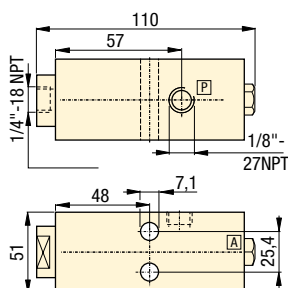
VAS-42



QE-375



HV-1000A

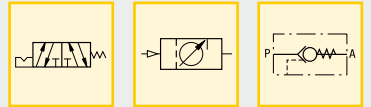


Air Pressure: 0 - 10 bar

E Válvulas de aire

F Valves à air

D Luftventile



Options

Gauges and adaptors

190 ▶



Hoses

192 ▶



Fittings

194 ▶



Important

Valving help
See Basic System Set-up
and Valve information in our
"Yellow Pages".

197 ▶